



COLOURS



1882 Lilla Chiaro



1880 Cipria



1841 Lampone



1881 Orchidea



1840 Fucsia



1883 Melanzana



1870 Chocolat

Deep and bright or delicate and fogged, the new proposals of the Collection enrich the shades of the colours palette. A swarm of decoratives that exalt each tone feature and develop endless projects.

OI
COLOURS



1850 Lime



1855 Verde Pistacchio



1852 Verde Oliva



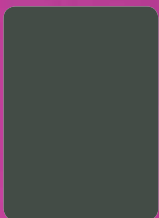
1851 Verde Mela



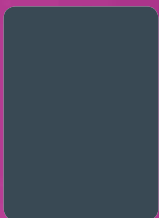
1831 Grigio Fango



1853 Muschio



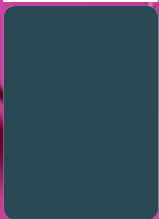
1830 Grigio Etna



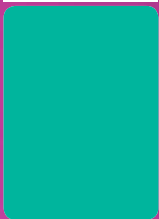
1832 Grigio Tempesta



1860 Samoa



1861 Blu Notte



1854 Verde Smeraldo



COLOURS AND TEXTURES



1850 Fin. Root



1851 Fin. Root



1883 Fin. Root



1832 Fin. Root



1850 Fin. Cross



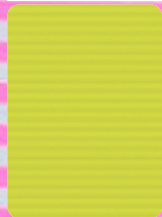
1851 Fin. Cross



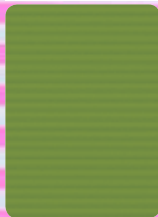
1883 Fin. Cross



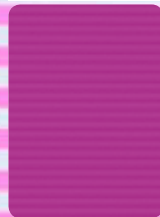
1832 Fin. Cross



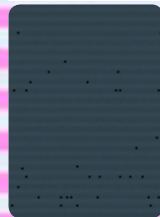
1850 Fin. Millerighe 2



1851 Fin. Millerighe 2



1840 Fin. Millerighe 2



1832 Fin. Millerighe 2



1841 Fin. Millerighe 2



1870 Fin. Climb



1840 Fin. Climb



1841 Fin. Climb



1870 Fin. Grana 2



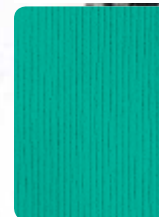
1840 Fin. Grana 2



1841 Fin. Grana 2



1832 Fin. Longline



1854 Fin. Longline

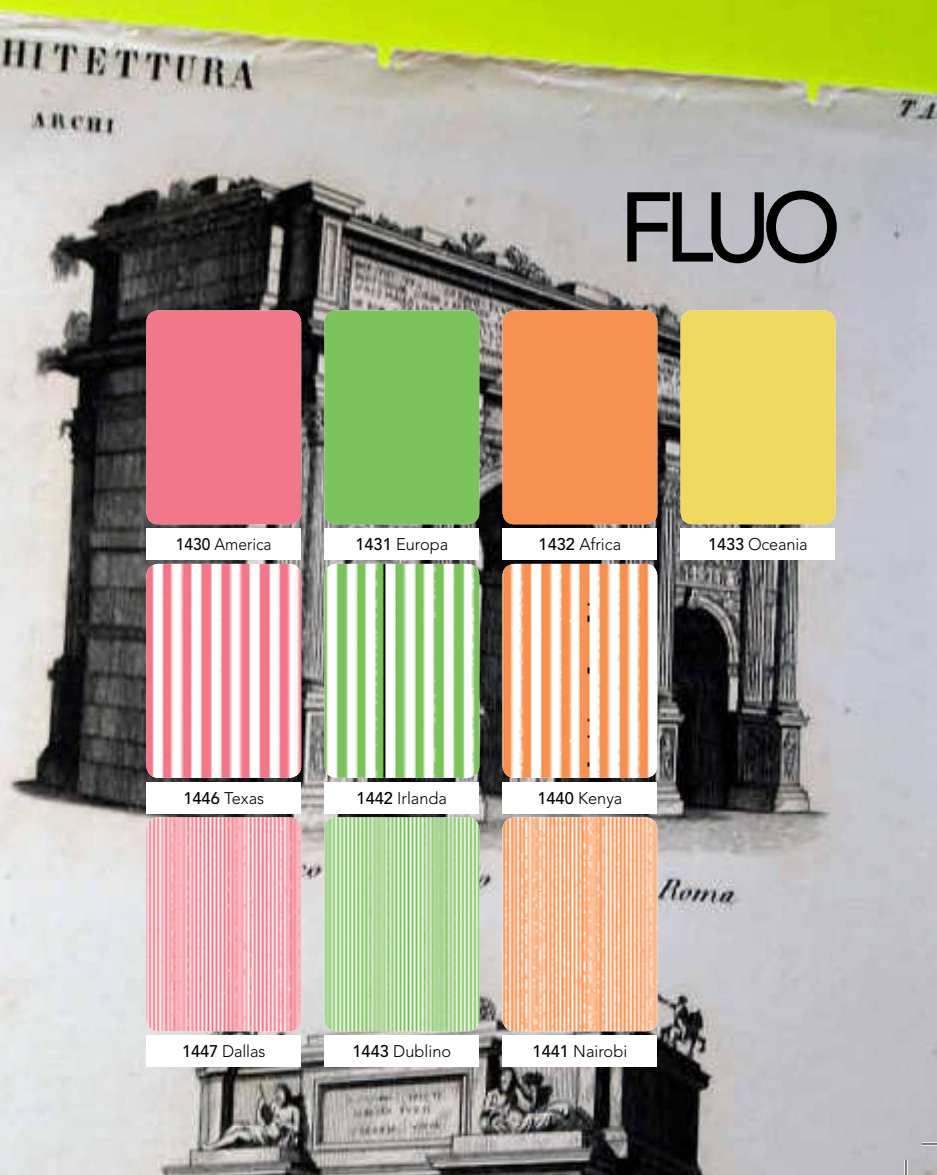


1832 Fin. Microline



Colour always meets new textures. An elegant range to create curious and harmonic weaves. With its dazzling flashes, Fluo fills the glance and awakens the attention even with a single detail.

O2
COLOURS
AND TEXTURES
FLUO



FLUO



1430 America



1431 Europa



1432 Africa



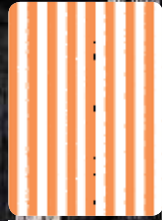
1433 Oceania



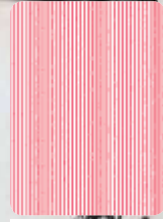
1446 Texas



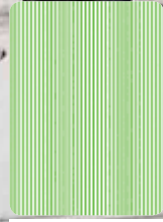
1442 Irlanda



1440 Kenya



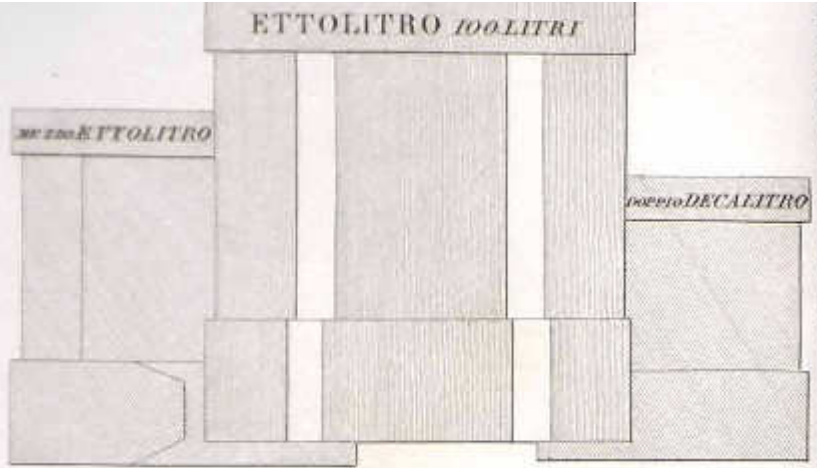
1447 Dallas



1443 Dublino



1441 Nairobi



HR-LAQ



1841 Lampone

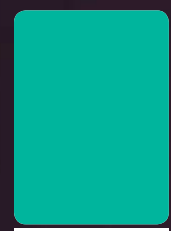
1883 Melanzana



1850 Lime



1860 Samoa



1854 Verde Smeraldo



A palette of inspiring ideas with highly glossy surfaces, HR-Laq includes now five new brilliant tones. Full-Wood: a refined selection of wood proposals.



EO
 HR-LAQ
 COLORPACT
 FULL-COLOUR
 FULL-WOOD
 EVANESCENCE
 KALEIDOS





Montesquieu

FULL-WOOD



1385 White Ash



679 Pino Varaita



1386 Saw Cut Ash



620 Maple



674 Eucalipto



LEGNI NEWS



678 Quercia Nordica



677 Old Wood



674 Eucalipto



1392 Rovere Moka



1393 Rovere Saraceno





679 Pino Varaita



670 Rovere Artico



672 Quercia Grigia



1394 Olmo Perlato

Woods of perfect and actual nuances matching together to create a new choral harmony. Abet Laminati introduces the wood tones in the new finish Cross in an evolving search for perfection.

OS
LEGGI NEWS



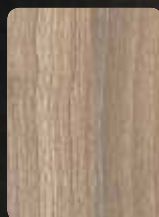
671 Faggio Rustico



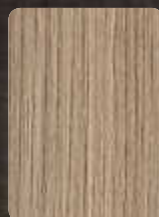
680 Pino Susa



673 Quercia Miele



668 Apple Tree



1396 Olmo Biondo



669 Rovere Primitivo



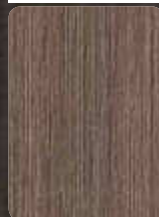
1395 Olmo Ambrato



675 Olmo Nelson



1390 Olmo Nancy



1391 Olmo Grenoble

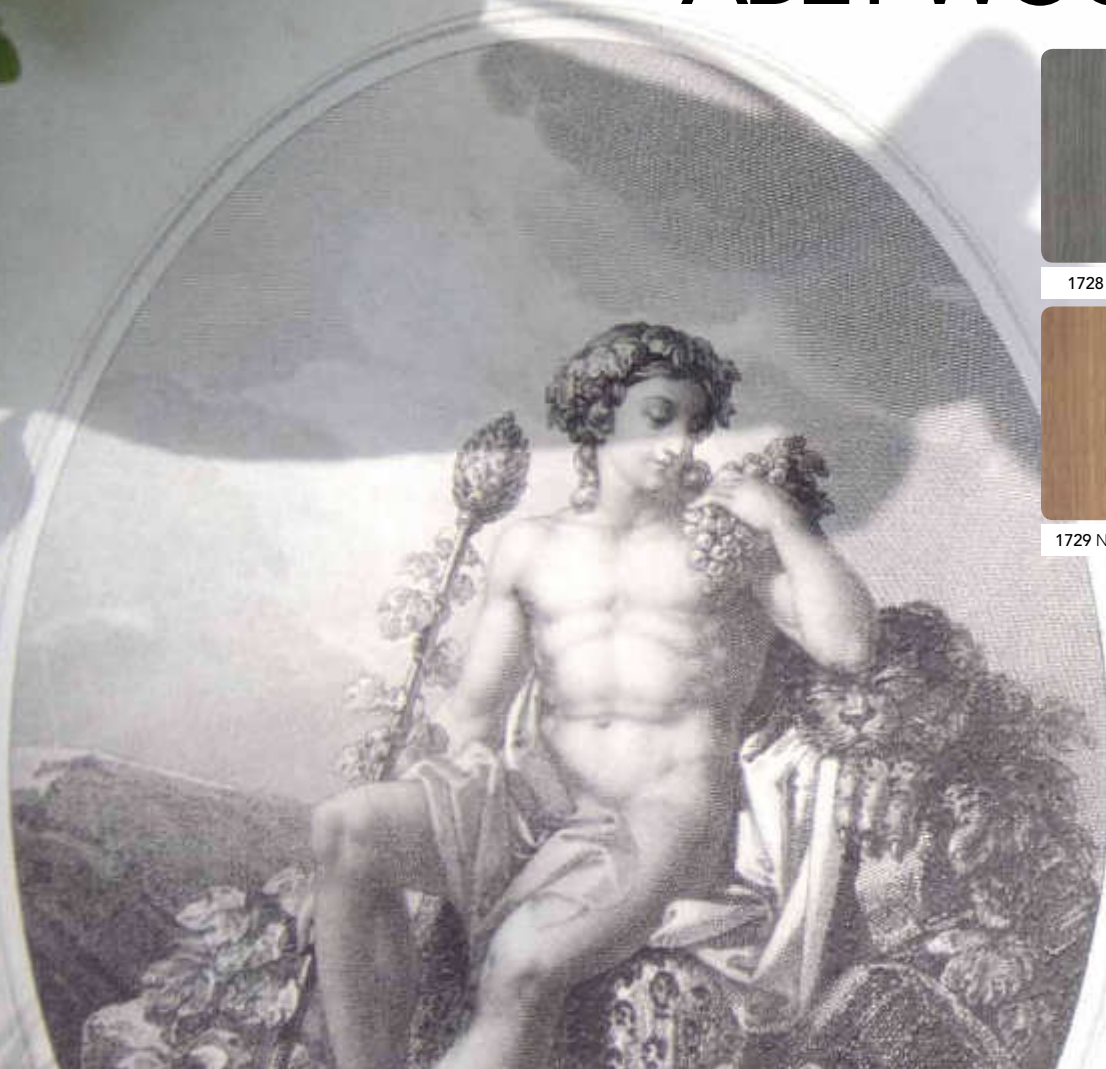
ABET WOOD




1728 Quercus



1729 Natural Elm



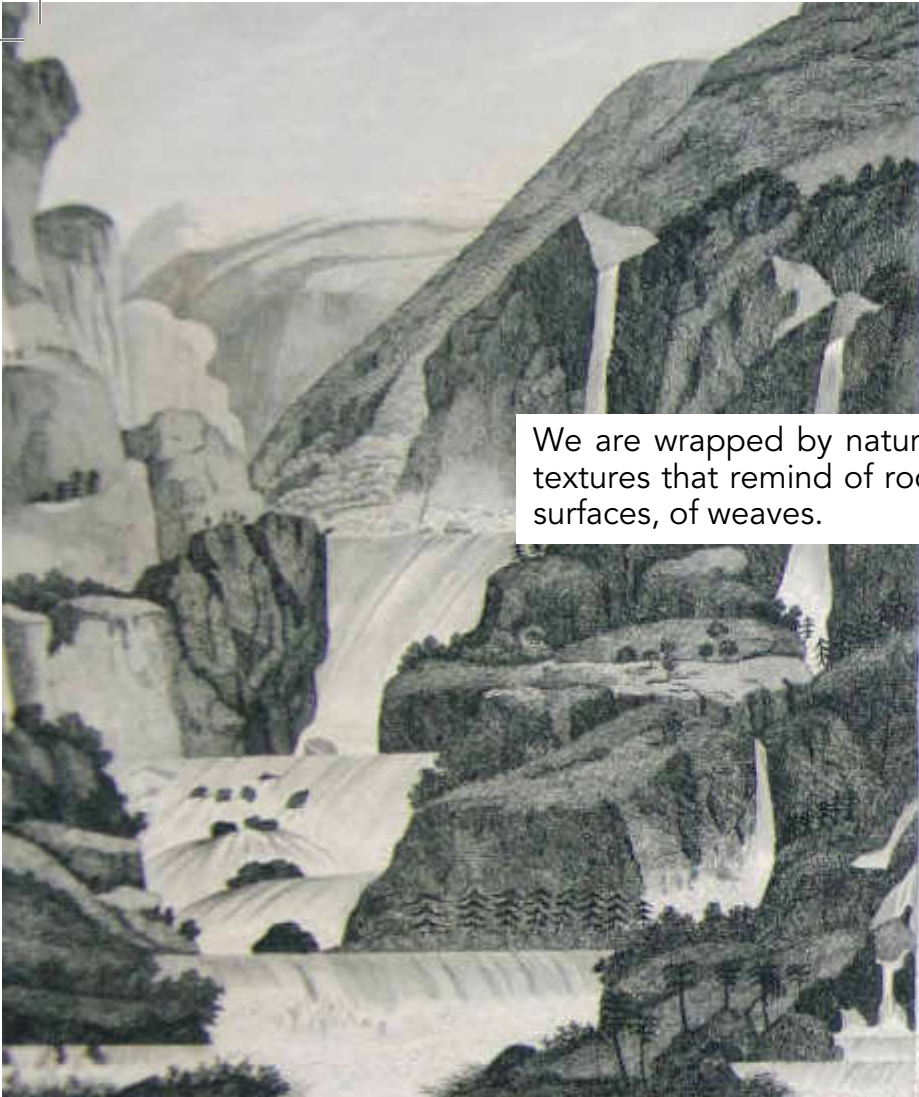
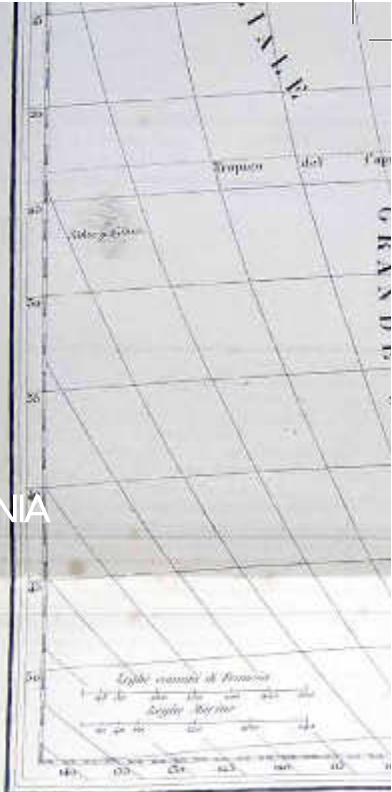
A photograph of a wooden surface, likely a table or desk, with a natural wood grain. On the right side, there is a lush arrangement of green foliage, including various leafy plants and a small cluster of white flowers. The lighting is soft, creating a warm and natural atmosphere.

In this rich and material catalogue, the protagonists are the real essences. The Collection matches perfectly the tones of the wood by revamping its real origin.

06
ABET WOOD

We are wrapped by natural tones and textures that remind of rocks, of rough surfaces, of weaves.

01
PATAGONIA
ROCKS
TRAMA



ALLE ALTEZZE COMPARATIVE DELLE PIU' FAMOSE CASCATE E CATERATE

CONTO CONSIDERARE DAL PRIMO DEI PARTIRI NELLE CASCATE VEDI LE LETTERE ADE BACCHI DI UNA CASATA
 Le Catarate del Niagara, dell'Orapato e dell'Orapato non sono perpendicolari,
 ma composte di una serie di piccole casate che formano una corrente.

Nome	Altezza	Nome	Altezza
1. Anselmo	100	1. Anselmo	100
2. Anselmo	100	2. Anselmo	100
3. Anselmo	100	3. Anselmo	100
4. Anselmo	100	4. Anselmo	100
5. Anselmo	100	5. Anselmo	100
6. Anselmo	100	6. Anselmo	100
7. Anselmo	100	7. Anselmo	100
8. Anselmo	100	8. Anselmo	100
9. Anselmo	100	9. Anselmo	100
10. Anselmo	100	10. Anselmo	100

TRAMA



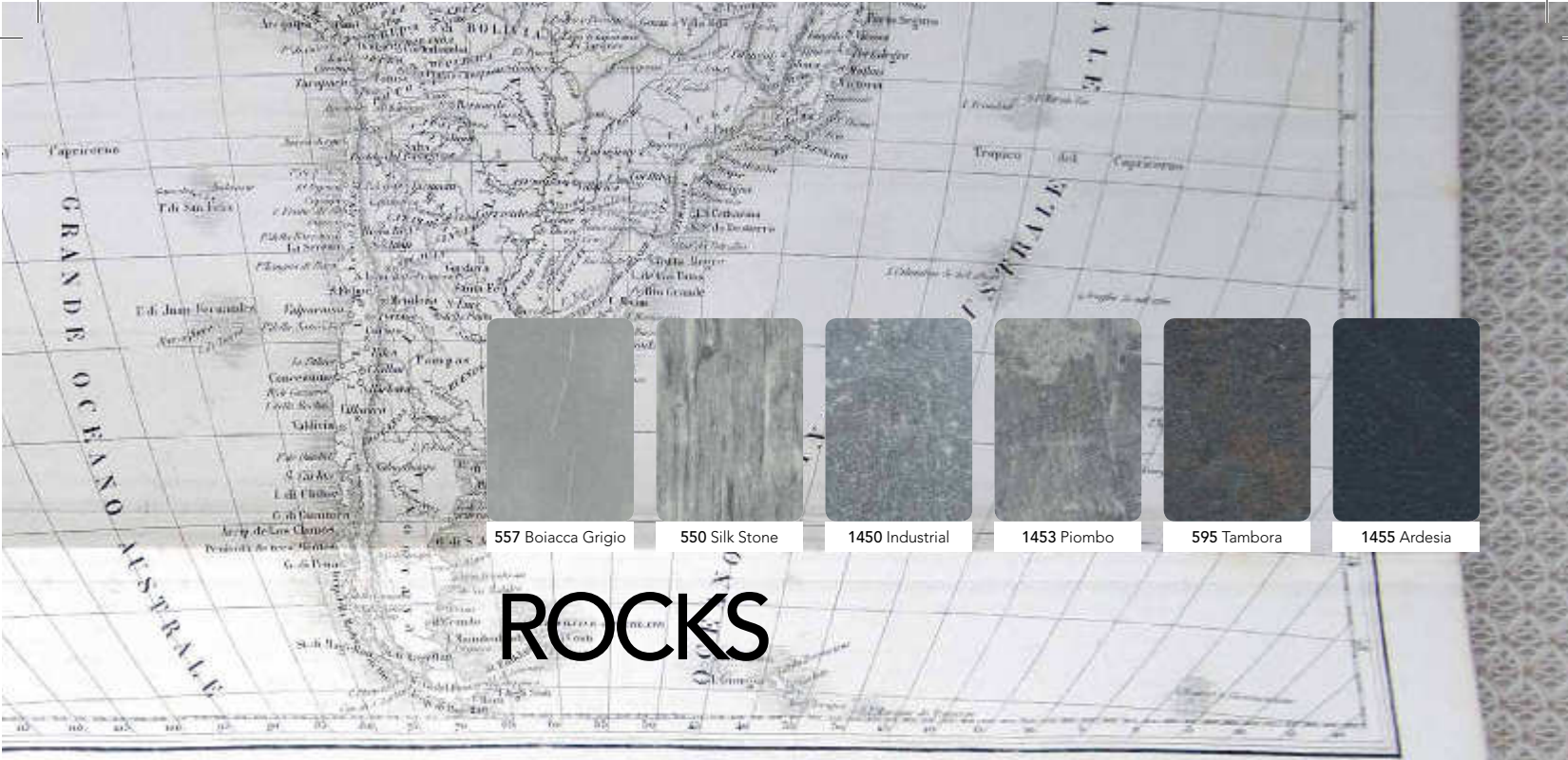
1580 Dedalo Brown

1581 Dedalo Greige

1582 Dedalo Grey

560 Twist Light

571 Black Carbon



557 Boiaccia Grigio



550 Silk Stone



1450 Industrial



1453 Piombo



595 Tambora



1455 Ardesia

ROCKS



598 Vienna



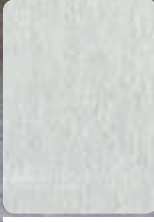
597 Arenite



581 Frattazzo



558 Boiaccia Beige



1454 Egizio



599 Rezina



559 Petra



1451 Urban Style



549 Caucaso



544 Plaster



1452 Wall



596 Pietrogrado

Great elegance and sobriety characterize this luxurious folder. A new, styling decor completes the Metalli Collection and inspires the imagination to dream of sophisticated combinations.

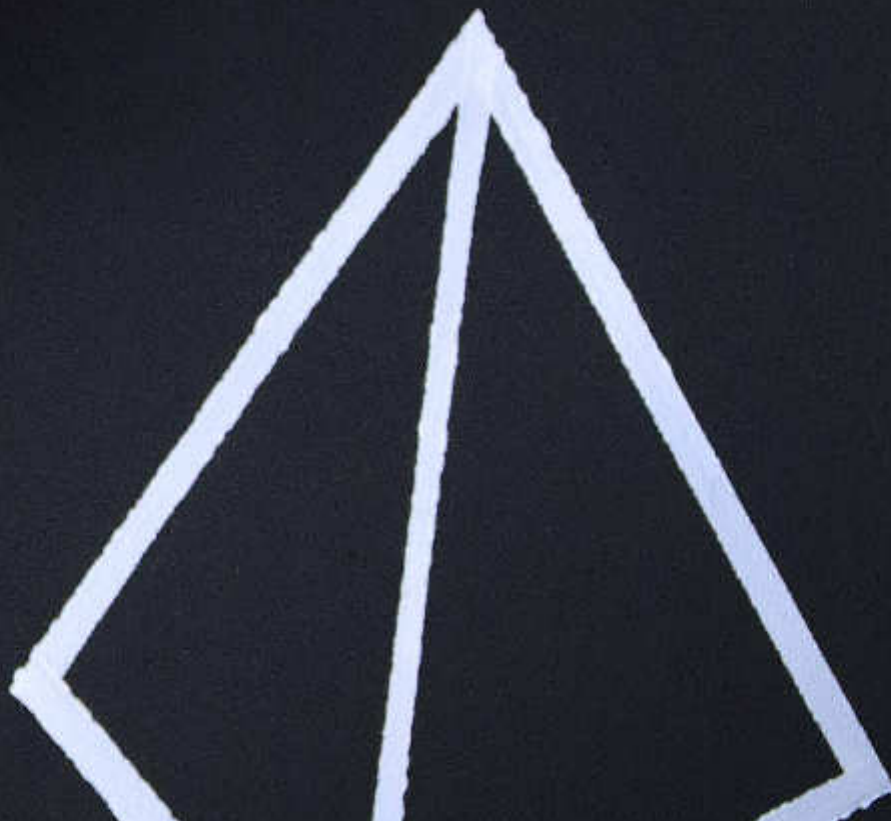
O&
TITANIUM
METALLI
DROPS
CRYSTALINE

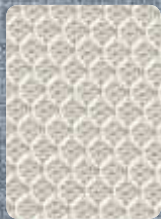


METALLI



878 Fin. Morbida





1581



549



1453



560

WALKPRINT

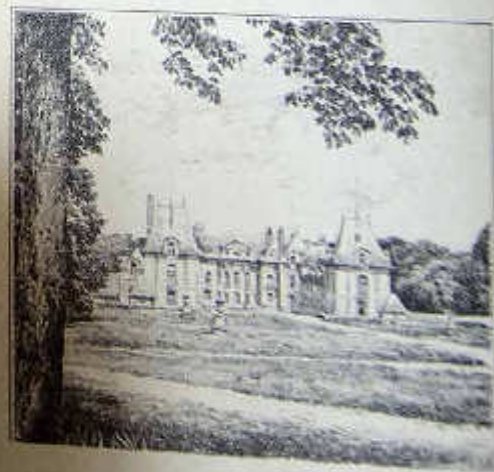


FO GI
P
de
s'él
do
Ue
on
l'e
la
pu
vo
lu
ter
ba
le
in
vi
D
El

GROSBOIS (Château de)* (fin).

En 1807, le château est donné en majorat par Napoléon au maréchal Berthier major général - les majorats, qui sont héréditaires, permettent à le noblesse son rang.

Le maréchal Berthier, prince de Wagram. — Né à Versailles en 1752, il est d'un noble de l'armée. A l'âge de l'état-major charbonnier par dépendance en 1789, il est le Comte de la Garde Nationale qui est comte juillet. En 1795 d'état-major prend le commandement d'Italie d'état-major cette date, le prince, prince souverain de depuis un siècle.



(D'après photo Fourcaud.)

Grosbois. — Le château.

château de son beau-père. S'est-il jeté dans le vide pour échapper à son ennemi ? Le point n'est pas de savoir si le château a été précipité ? Le point n'est pas de savoir si le château a été précipité ?

A corollary of textures that enhance the beauty of each decor to inspire a project. The chances increase and the ideas flourish.

12
FINISHES

FINISHES



Fin. Papier



Fin. Cross



Fin. Root